

# Graflex Graphic Cameras



**SINGER**  
EDUCATION & TRAINING PRODUCTS



Large format Graflex Graphic Cameras take in the whole scene. Give you a maximum image—therefore maximum resolution, clarity, extremely fine detail, plus unsurpassed flexibility. They allow even small sections of a negative to be enlarged with outstanding fidelity. And, with front standard adjustment, you can control focus and correct normal perspective distortion—or introduce distortion to suit your artistic needs plus increase depth of sharpness with selective point of focus. Whether you are a commercial photographer, a fashion photographer, or a photographer's photographer, Graphic cameras have the features you need—features to be found in no other camera at any price.

## **Pacemaker Crown Graphic® 45 is the work horse for professionals.**

For years now, the pros have picked the Pacemaker Crown Graphic 45 because of its adaptability, and dependability. In the studio or on location.

It has the reputation as the work horse of the 4x5's because it is truly a full-size, general purpose camera. The camera that time after time gives you clear, sharp pictures with no fuss and no bother.

### **Applications:**

General purpose 4" x 5" professional photography in the studio or on locations. Also for weddings, police and fire work, commercial and industrial applications.

### **Features:**

Graflok back with Ektalite field lens for easier ground glass focusing; built-in Graphic Rangefinder with interchangeable cams; rack and pinion focusing for all lenses; removable ground glass viewing hood; optical viewfinder with automatic parallax adjustment; interchangeable masks for optical finder.

### **Adjustments:**

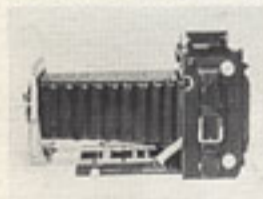


Front standard rises  $1\frac{1}{8}$ " , shifts  $\frac{1}{32}$ " from center, tilts back  $18\frac{1}{2}$ °. The  $18\frac{1}{2}$ ° drop bed allows use of extreme wide-angle lenses and forward tilt of front optics.

### **Optical Viewfinder:**

Has built-in automatic parallax correction; accepts masks to show field included by normal and telephoto lenses; has special wide angle viewfinder adapter.

### **Double-Extension Bellows:**

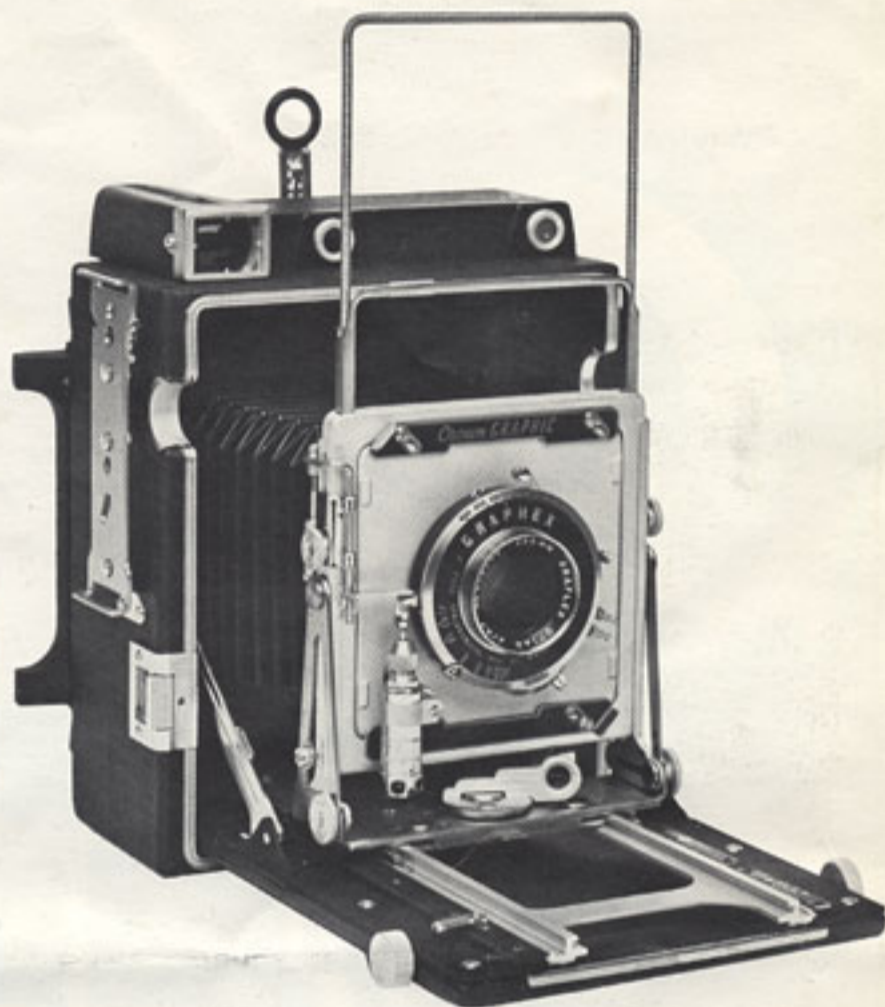


$2\frac{1}{2}$ " to  $12\frac{1}{2}$ " for 1:1 copies without extension tubes or expensive optical accessories.

### **Sports Viewfinder:**



Long-wearing coil-spring construction; quick and easy composition of pictures with no blind spots; accepts plastic masks for roll film and telephoto formats; rear peepsight has parallax adjustment.



### **Exclusive Rangelite:**

Built into rangefinder; projects two beams of light on subject. Perfect focusing when beams converge; ideal for focusing in dim light or night photography.

### **Ground Glass Focusing:**



For critical or selective focus and for exact determination of composition and depth of field.

### **Accessories:**

Full range of film holders, flash units, lenses, cords, and tripods.

### **Interchangeable Lenses:**

Full range of accessory lenses from 90mm to 380mm telephoto, cam-matched to built-in Graphic Rangefinder plus a Super Angulon 65mm wide angle lens in special focusing mount.

### **Interchangeable Film Holders:**

Switch instantly from one type of film to another—color or black-and-white, single sheets, 16 exp. packs, 120, 220 roll film, 70mm or Polaroid roll film, also accepts series 545 Polaroid 4x5 back.



## 4 x 5 Pacemaker Crown Graphic Cameras

### CAT. NO.

- CF-13: Camera less lens. (Supplied on special order).  
CF-9341: With 127mm (5") Graflex Optar f/4.5 lens in No. 2 Graphex full sync shutter (38mm Filter mt. dia.)  
CF-93: With 135mm (5¼") Graflex Optar f/4.7 lens in No. 2 Graphex full sync shutter (38mm filter mt. dia.)  
CF-94: With 150mm (6") Rodenstock Ysarex f/4.5 lens in No. 1 Compur MX shutter (51mm Filter mt. dia.)  
CF-904: Pacemaker Crown Graphic Special Camera, 135mm Schneider Xenar f/4.7 lens in No. 0 shutter (top speed 1/500) (42mm Filter mt. dia.)

### Pacemaker Crown Outfit A:

Including 3-cell Graflite Unit with 5" reflector (2735) and 20" sync shutter cord (2701 or 2721).

### CAT. NO.

- CF-241A: With 127mm (5") Graflex Optar f/4.5 lens  
CF-93A: With 135mm (5¼") Graflex Optar f/4.7 lens  
CF-94A: With 150mm (6") Rodenstock Ysarex f/4.5 lens

### Pacemaker Crown Outfit B:

Including 3-cell Graflite, 5" reflector, solenoid and 20" cord (2736), installation and synchronization of solenoid (9460).

### CAT. NO.

- CF-241B: With 127mm (5") Graflex Optar f/4.5 lens  
CF-93B: With 135mm (5¼") Graflex Optar f/4.7 lens  
CF-94B: With 150mm (6") Rodenstock Ysarex f/4.5 lens

### Pacemaker Crown Outfit E:

Including ST 250 Electronic Flash outfit (2301)  
Battery Case Clamps (2771)  
Cable Release Kit, Fitted (9457)  
36" Expando cord (2821)

### CAT. NO.

- CF-904-E: With 135mm Xenar f/4.7 lens

## Century Graphic® 23 is the top value in medium-format photography

In this one camera you have the most important features of Graflex's famous Graphic 45 cameras tailored to 2¼x3¼" negatives and roll film formats.

The Century Graphic 23 goes where the action is; gives dependable, trouble-free operation whether you are a professional or advanced amateur looking for economy in a high performance camera.

And once you have your Graphic 23, you can add a wide variety of lenses, film holders and other Graflex accessories to extend its range even further.

### Applications:

Medium format photography for weddings, sporting events, child photography. Ideal for journalists, student photographers, advanced amateurs.

### Features:

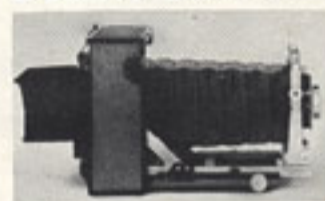
Graflok back; optical viewfinder; sports-finder; optional accessories such as Kalart rangefinder, Graflite Mounting plate, and Multigrip with front standard features of the 4x5 Pacemaker Graphic.

### Adjustments:

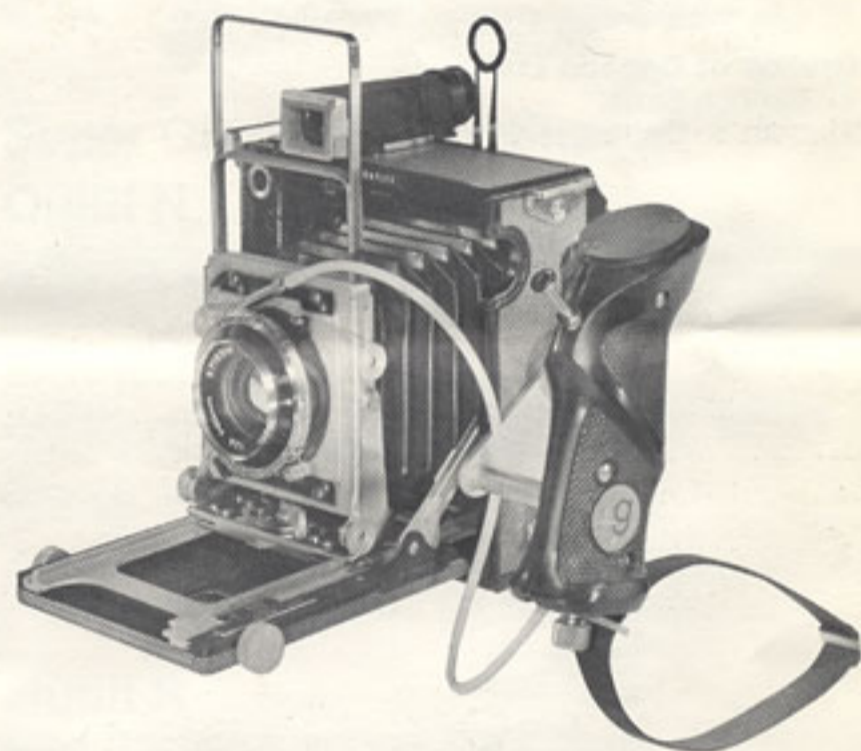


Rise-shift-tilt front standard to correct distortion and control perspective; lateral shift 1/16" total; vertical shift 1/16"; tilt 18½ back, drop bed 18½.

### Double Extension Bellows:



8" extension for closeups; full size (1:1 ratio) image for small objects and copying with normal lens.



### Ground Glass Focusing:



View subject just as it will be on film; better control of composition, depth of field and selective focus.

### Optical Viewfinder:



Has Parallax adjustment; interchangeable masks for different lenses and film formats.

### Sportsfinder:

For full size viewing of subject; no blind spots.



## Accessories:

### Interchangeable Film Holders:

Switch instantly from one type of film to another—color or black-and-white, single sheets, 16 exp. packs, 120, 220 roll film.

### RH/10 Rapid Vance Roll Film Holders:



Get 10 exposures on 120 roll film in ideal 2¼" x 2¾" format. Holder has dark slide, notation panel, film flatteners, quick-change preloadable cartridges, automatic film counter, rapid lever advance. (RH-12 and RH-20 Holders also available.)

### Multi-Grip:



For faster camera operation, steadier support; fully adjustable, scientifically contoured; attaches quickly without tools; built-in cable release; adjustable wrist strap.

### Interchangeable Lenses:

Complete range of lenses for normal, telephoto or wide-angle shots accepted by Century Graphic 23.

## Century Graphic 23 Cameras

### CAT. NO.

- CY-13: Century Graphic 23 camera less lens (supplied on special order).
- CY-5530: With 101mm Graflex Graflar f/4.5 lens in No. 0 Prontor SVS shutter, M-X sync and EV coupling with long optical viewfinder.
- CY-5341: With 100mm Zeiss Tessar f/3.5 lens in MXV-0 Synchro-Compur shutter with long optical viewfinder.
- CY-58: With 80mm Rodenstock Heligon f/2.8 lens in MXV-0 Synchro Compur shutter with long optical viewfinder.

## Century Graphic Camera Outfits:

Century Graphic Camera with lens and accessories listed.

### Outfit P (Professional)

- Century Graphic Camera • Kalart rangefinder, fitted (3101)
- Graflite mounting plate, fitted (2754) • Multi-Grip (9127)
- RH/10 Rapid-Vance roll film holder (1253)

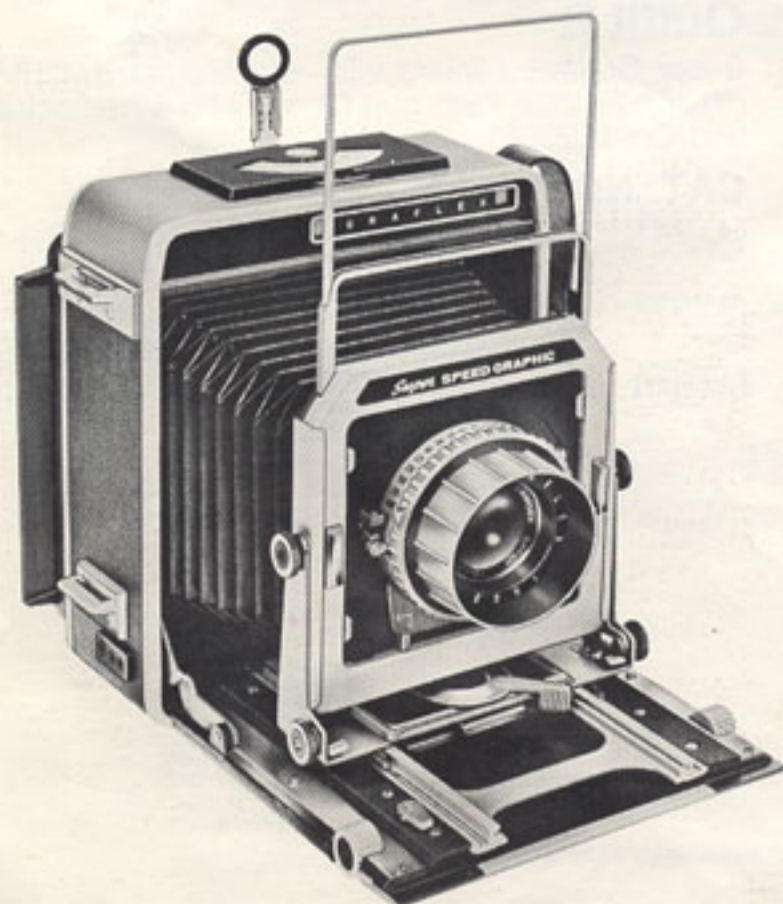
### Outfit T

- Century Graphic Camera • Kalart rangefinder, fitted (3101)
- Graflite mounting plate, fitted (2754) • Cable release kit, fitted (9457) • Graflite, Jr. with mounting clamps (2852) • 20" Sync shutter cord (2721)

### Outfit V

- Century Graphic Camera • Kalart rangefinder, fitted (3101)
- Graflite mounting plate, fitted (2754) • Cable release kit, fitted (9457)

Century Graphic Camera Lens	Catalog Number		
	Outfit V	Outfit T	Prof. Outfit P
101mm Graflex Graflar f/4.5	CY530V	CY530T	CY530P
80mm Rodenstock Heligon f/2.8	CY58V	CY58T	CY58P
100mm Zeiss Tessar f/3.5	CY341V	CY341T	CY341P



## Super Graphic® 45 takes the shot you want when you want it.

The Super Graphic 45 is packed with features that make it the standard of 4x5 excellence.

This is the camera to use when there is no margin for error. When a big moment must be captured just right, the first time.

Under a wide variety of conditions and speeds, indoors and out, the Super Graphic 45 is designed to operate with precision.

If you're a professional you can afford nothing less.

### Applications:

4" x 5" professional photography of weddings, sporting events; and architectural, industrial and commercial use indoors or out.



### Bonus Features:

Large, easy to insert, individually matched range-finder cams; sports viewfinder; ground glass focusing panel with removable focusing hood; dark slide clip; cam-action slide locks; accessory Presslok tripod mount; interchangeable, internally wired lensboard assemblies; and built-in 45V solenoid and microswitch.

### Lightweight:

Reinforced extruded aluminum for maximum strength, minimum weight in large negative hand camera; only 4¾ lbs. complete.

### Improved Front Standard and Drop Bed:

Controls image distortion, parallelism, composition and depth of field; tilt, 15° back, 12° forward; swing from center 25°; lateral shift from center ½"; rise 1½"; 15° drop bed permits use of extreme wide angle lens and additional forward tilt of lens.



### Built-In Automatic Flash Exposure Calculator:

A Graflex exclusive which lets you dial the Flash Guide Number and focus on subject; calculator automatically shows camera-to-subject distance and correct aperture setting for perfect exposure.



### Electrically Operated Shutter Release:

Ends blurring; shutter released by touching microswitch on camera or on Graflite battery case.

### Lite-Tite Revolving Graflok Back:

Revolves a full 360° in either direction without fogging film; change from horizontal to vertical format without moving camera; insert and remove film holders from any direction.



### Built-In Rangefinder:

Cam-coupled to lens; large, easily interchanged cams assure perfect focus for 90mm to 380mm lenses.

### Cam Coupled Focusing Scale:

Focusing scale is coupled to the rangefinder and indicated by pointer at top of camera.



### Double Extension Bellows:

Allows 1:1 photography without extension tubes or expensive optical accessories, fuller use of long focal-length telephoto lenses up to 15" in focal length.

### Sportsfinder:



Lets you watch the action develop for better, easier composition of action subject; accepts plastic masks for roll film and telephoto formats; rear peep-sight has parallax adjustment.

### Accessories:

Full range of Graflex quality lenses, film holders, flash units (electronic and flash bulb), connecting cords, tripods, optical viewfinder, masks for lens and film formats, and wide angle viewfinder adapter.

## Super Graphic 45 Cameras

### CAT. NO.

- SU-13: Camera less lens (supplied on special order)
- SU-9241: With 127mm (5") Graflex Optar f/4.5 lens in No. 2 Graphex full sync shutter
- SU-93: With 135mm (5¼") Graflex Optar f/4.7 lens in No. 2 Graphex full sync shutter
- SU-94: With 150mm (6") Rodenstock Ysarex f/4.5 lens in No. 1 Compur MX shutter

## Super Graphic 45 Outfits

### Outfit N

Super Graphic camera with lens indicated, Graflite Flash gun (2 cell with 5" reflector) (2725), Y cord (2802), Presslock tripod mount (4595).

### CAT. NO.

- SU-24N: With 127mm (5") Graflex Optar f/4.5 lens in No. 2 Graphex full sync shutter
- SU-93N: With 135mm (5¼") Graflex Optar f/4.7 lens in No. 2 Graphex full sync shutter
- SU-94N: With 150mm (6") Rodenstock Ysarex f/4.5 lens in No. 1 Compur MX shutter

### Outfit R

Super Graphic camera with lens indicated, Optical finder (9136), Graflite flash gun (2 cell with 5" reflector) (2725), and Cord (2802).

### CAT. NO.

- SU-241R: With 127mm (5") Graflex Optar f/4.5 lens in No. 2 Graphex full sync shutter
- SU-93R: With 135mm (5¼") Graflex Optar f/4.7 lens in No. 2 Graphex full sync shutter
- SU-94R: With 150mm (6") Rodenstock Ysarex f/4.5 lens in No. 1 Compur MX shutter