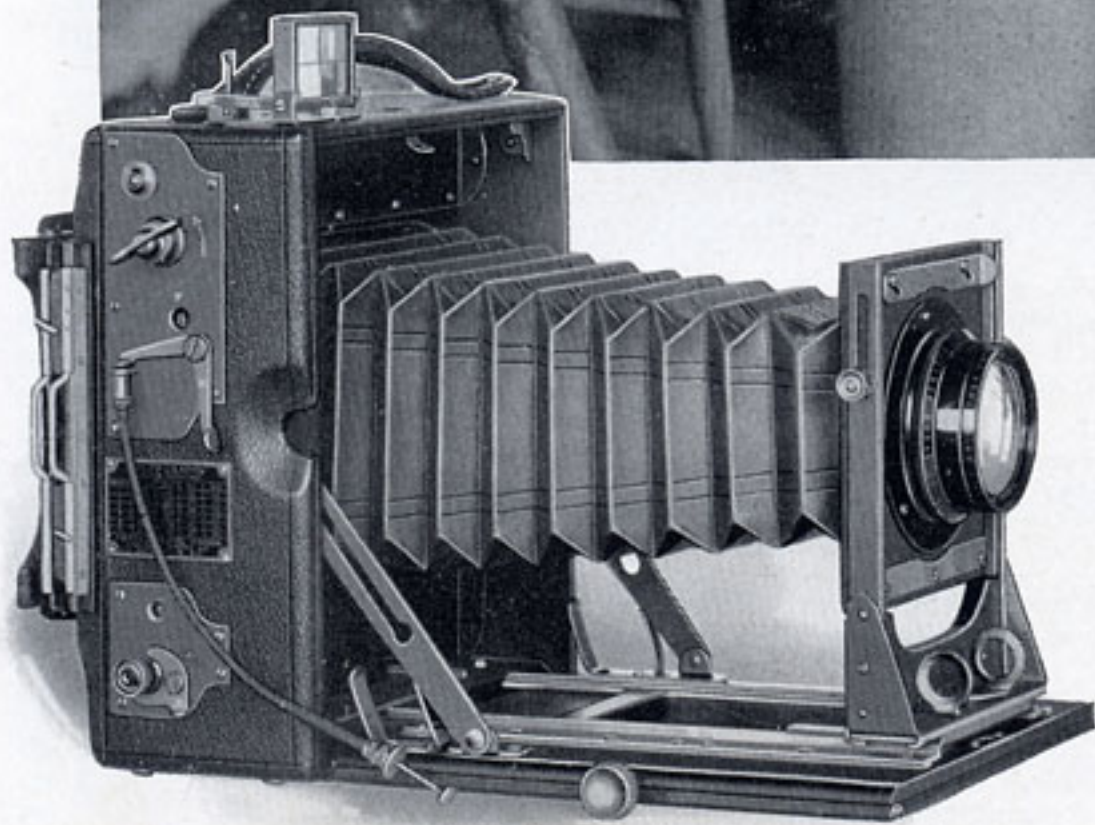


GRAFLEX



4 x 5 Speed Graphic

Dimensions, $6\frac{1}{2}$ x 4
x $6\frac{3}{8}$ in. Bel-
lows capacity, 12
in. Weight with
lens, $4\frac{1}{4}$ lbs.
Focal length of
lens, $6\frac{3}{8}$ in.

4 x 5 Speed Graphic

THIS camera with direct finder, focal plane shutter and fast lens has a long list of partisans. In appearance and in ability, it is perhaps the finest of folding cameras.

Focus is controlled by a distance scale or by studying the image on the ground glass. The direct type of finder is, with many camerists, the preferred method of sighting the subject.

Although this instrument is sold without lens, the Kodak Anastigmat *f.4.5* is recommended because of the sparkling definition that it puts into the negative.

Notice below that the Speed Graphic is obtainable with the Graflex style of back, which accommodates interchangeable holders, adapters and magazines.

Press photographers praise the Speed Graphic—proof enough that it is a capable camera, equal to a vast variety of difficult jobs.

Focal plane shutter gives twenty-four speeds from 1/10 to 1/1000 and any time desired. A cut film holder, a film pack adapter or a plate holder can be used on the regular Graphic back. When fitted with the Graflex back, however, this camera accommodates cut film, roll film, film packs and plates in the interchangeable Graflex accessories listed below.

PRICES

	4 x 5
SPEED GRAPHIC, without lens, including one cut film holder (plate holder optional)	\$ 75.00
With Kodak Anastigmat Lens <i>f.4.5</i> , No. 32	116.00
*SPEED GRAPHIC (Graflex back), without lens	88.00
*With Kodak Anastigmat Lens <i>f.4.5</i> , No. 32	129.00
Graphic Plate Holder	2.50
Graphic Cut Film Holder	2.50
Film Pack Adapter (for use on Speed Graphic with regular back).	3.50
Graflex Roll Holder, No. 53.	13.50
Graflex Cut Film Holder	3.00
Graflex Cut Film Magazine	15.50
Graflex Film Pack Adapter	6.50
Graflex Plate Holder	3.00
Graflex Plate Magazine	15.50
Leather Case for camera and six holders	11.00
Kodak Pictorial Diffusion Disk, No. 32	5.00
Extra Lens Board	.75
Kodak Cut Film <i>Regular Speed</i> , doz.	.90
Kodak Cut Film <i>Super Speed</i> , doz.	1.00
Kodak Film Pack, No. 523	1.10
Kodak Film Cartridge, 6 exposures, No. 53	.55

*When the Graflex type of back is desired, please specify "Speed Graphic with Graflex back."



$3\frac{1}{4} \times 4\frac{1}{4}$

Revolving Back Auto Graflex

$3\frac{1}{4} \times 4\frac{1}{4}$ —Dimensions, $8\frac{1}{2} \times 5\frac{1}{2} \times 7$. Bellows capacity, $15\frac{1}{2}$ in. Weight, $5\frac{3}{4}$ lbs. Size of lens board, $3\frac{1}{4} \times 3\frac{1}{4}$ in. Minimum focus of lenses accommodated, $7\frac{1}{2}$ in. Focal length of lenses listed: Kodak Anastigmat $f.4.5$, $7\frac{1}{2}$ in.; B. & L. Protar, Series VIIa, $f.6.3$, complete, $7\frac{7}{8}$ in.; either element singly, $13\frac{3}{4}$ in.

4×5 —Dimensions, $10 \times 6\frac{1}{4} \times 8$. Bellows capacity, $18\frac{1}{2}$ in. Weight, 7 lbs. Size of lens board, $3\frac{3}{4} \times 3\frac{3}{4}$ in. Minimum focus of lenses

accommodated, 9 in. Focal length of lenses listed: Kodak Anastigmat $f.4.5$, 10 in.; B. & L. Protar Series VIIa, $f.6.3$, complete, $9\frac{1}{4}$ in.; either element singly, $16\frac{3}{16}$ in.



3¼ x 4¼ · 4 x 5

Revolving Back Auto Graflex

TRUE-SIZED close-ups are often essential: notebook data are minimized when the negative represents the blossom, jewel, specimen or design in actual dimension. Big images of distant objects are desirable: wild life and sports events must usually be viewed from afar. Both extremes lie within the province of this Graflex because generous bellows draw permits (1) work at short range and (2) the use of a long-focus lens such as the single element of a convertible anastigmat.

As aids to proper composition, a revolving back facilitates vertical pictures of tall subjects and a rising front controls foregrounds. A focusing panel is provided for the rear so that the image can be measured or examined under a magnifier.

Such conveniences combined with the reflecting mirror, focal plane shutter and fast lens endear this camera to nature lovers, scientists and other exacting photographers.

Amateurs and professionals alike respect the Auto Graflex and admire its versatility.

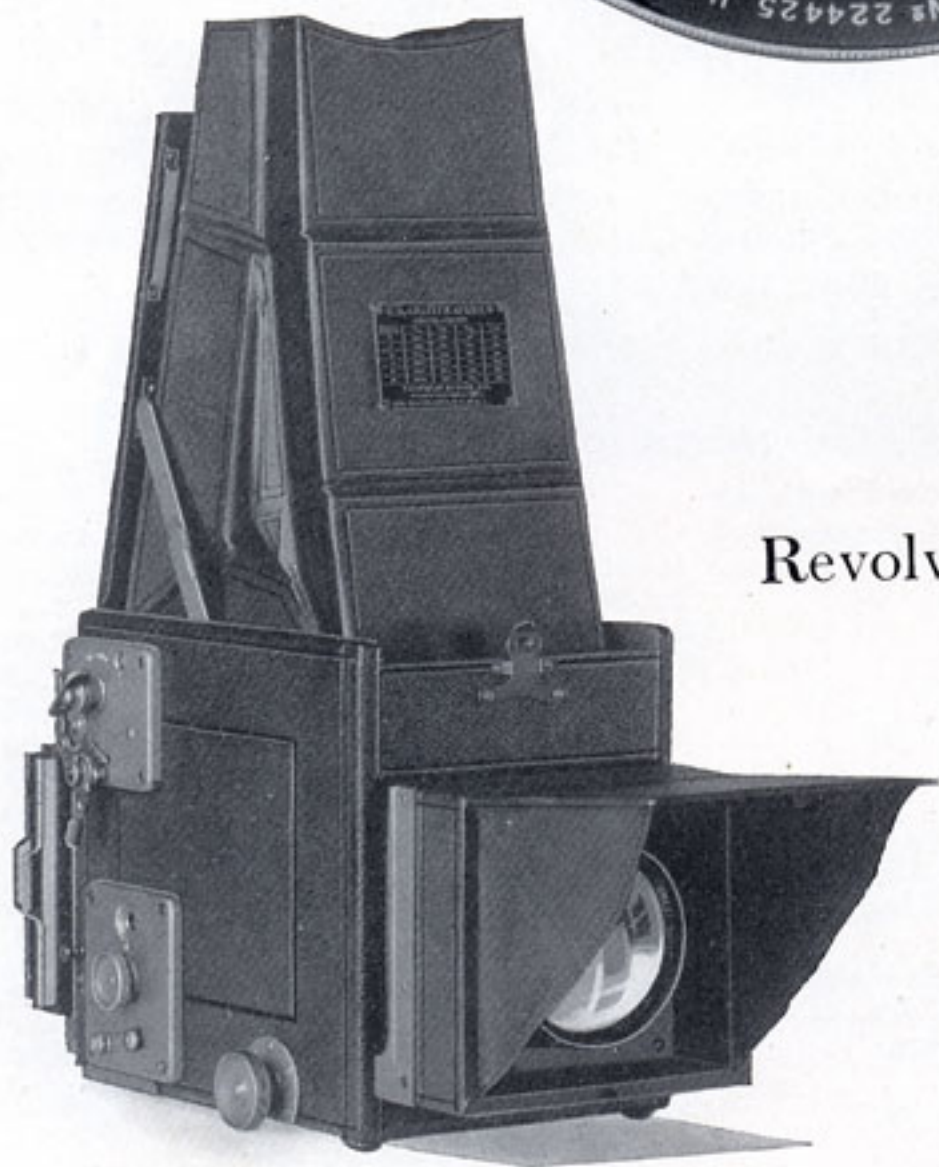
Focal plane shutter gives twenty-four speeds from 1/10 to 1/1000, also a slow exposure of about 1/5 and any time desired. Cut film, roll film, plates and film packs can be used in the interchangeable accessories listed below.

PRICES

	3¼ x 4¼	4 x 5
REVOLVING BACK AUTO GRAFLEX, without lens, including focusing panel and one cut film holder (plate holder optional)	\$108.00	\$124.00
With Kodak Anastigmat Lens f.4.5	No. 33 158.00	No. 35 232.00
With B. & L. Protar Lens, Series VIIa, f.6.3	No. 10 203.00	No. 13 249.00
Graflex Roll Holder	No. 51 12.50	No. 53 13.50
Graflex Cut Film Holder	2.75	3.00
Graflex Cut Film Magazine	14.50	15.50
Graflex Film Pack Adapter	5.50	6.50
Graflex Plate Holder	2.75	3.00
Graflex Plate Magazine	14.50	15.50
Kodak Pictorial Diffusion Disk	No. 33 5.00	
Leather Case for camera and roll holder or cut film magazine	11.00	13.50
Leather Case for camera and plate magazine	11.75	14.75
Extra Lens Board	.75	.90
Kodak Cut Film <i>Regular Speed</i> , doz.	.65	.90
Kodak Cut Film <i>Super Speed</i> , doz.	.75	1.00
Kodak Film Pack	No. 518 .90	No. 523 1.10
Kodak Film Cartridge, 6 exposures	No. 51 .45	No. 53 .55



*Cooke Anastigmat f.2.5
(shown here in exact
size) is the fastest lens
ever offered on a Graflex.*



Revolving Back Graflex *Series C*

Dimensions, $8\frac{1}{2} \times 5\frac{1}{2} \times 7\frac{1}{4}$
in. Weight, $7\frac{1}{4}$ lbs.
Focal length of lens,
 $6\frac{1}{2}$ in. Closest working
distance, 23 in.

3¼ x 4¼

Revolving Back Graflex, *Series C*

PICTURES commonly called impossible become easy through the magic of this camera. Cooke Anastigmat *f.2.5* is fast! three times as fast as *f.4.5* and ten times as fast as *f.8*. The extra light that this lens admits lets the Series C Graflex produce detailed negatives under conditions that keep ordinary outfits idle.

In the rain or in the woods or in the house—from dawn to dusk in almost any weather—owners of the Series C get pictures that are envied and admired. Kodak Cut Film *Super Speed* behind the Cooke Anastigmat *f.2.5* often permits snapshots of subjects that usually take *time*.

A metal mount holds the lens rigid. The hinged cover with side wings serves, when open, as a shield against the sun.

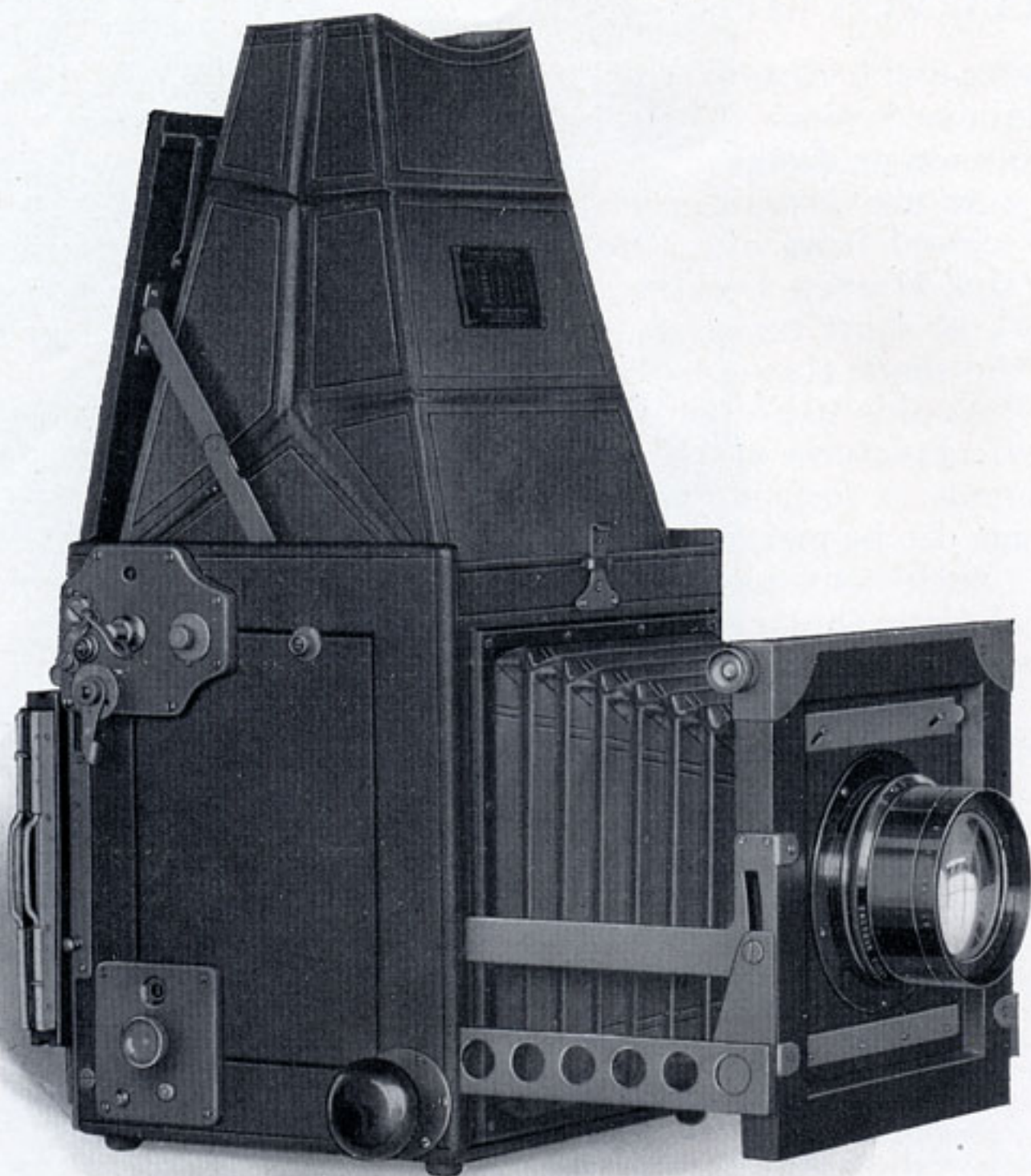
Exact focus is easy, thanks to the reflecting mirror. If the image looks sharp in the hood, it will surely look sharp in the picture.

Photographers who must bring in good results regardless of difficulties can safely rely on this camera. Its *extra* ability added to the usual wide scope of a Graflex equips the Series C for a sensational output of pictures.

Focal plane shutter gives twenty-four speeds from 1/10 to 1/1000, also a slow exposure of about 1/5 and any time desired. Cut film, roll film, plates and film packs can be used in the interchangeable accessories listed below.

PRICES

REVOLVING BACK GRAFLEX, <i>Series C</i> , with one cut film holder (plate holder optional) 3¼ x 4¼ and Cooke Anastigmat Lens <i>f.2.5</i>	\$260.00
Graflex Roll Holder, No. 51	12.50
Graflex Cut Film Holder	2.75
Graflex Cut Film Magazine	14.50
Graflex Film Pack Adapter	5.50
Graflex Plate Holder	2.75
Graflex Plate Magazine	14.50
Ground Glass Focusing Panel to interchange with holder	5.50
Leather Case for camera and roll holder or cut film magazine	11.00
Leather Case for camera and plate magazine	12.50
Kodak Cut Film <i>Regular Speed</i> , doz.65
Kodak Cut Film <i>Super Speed</i> , doz.75
Kodak Film Pack, No. 51890
Kodak Film Cartridge, 6 exposures, No. 5145



5 x 7 Home Portrait Graflex

Dimensions, $9\frac{3}{4} \times 9 \times 10\frac{1}{2}$ in. Focal capacity, 15 in. Weight with lens, $16\frac{3}{4}$ lbs. Size of lens board, 5 x 5 in. Minimum focus of lenses accommodated, 10 in.

5 x 7 Home Portrait Graflex

NATURALNESS in the portrait is easily attained with this camera. Watch the composition in the hood; raise, lower or swing the front; keep the focus under fingertip control. And at the prize moment record the spirited expression that gives a portrait such charm.

So definitely helpful are the special features of this Graflex that they enable the user to grasp countless opportunities for making home portraits and indoor story-telling pictures that only a hand-held instrument can get. Without shifting furniture for tripod space, the operator moves from viewpoint to viewpoint, always ready for the instant at which he sees in the hood the effect that he seeks.

With the Kodak Anastigmat *f.4.5* well open and *Super Speed* film in the holder, a slow automatic exposure often does instead of *time*. Stony stillness isn't necessary—a special advantage when the subject is a lively youngster. The lens of twelve-inch focal length encourages good perspective. The camera needn't be close to get a big image on the 5 x 7 area.

If you are after an instrument that is quickly adaptable to the varied needs of home portraiture, this is the camera. Other work also falls within its field but first of all it aims to make portraits that glow with personality.

Focal plane shutter gives twenty-four speeds from 1 to 1/500 and any time desired. Cut film, roll film, plates and film packs can be used in the interchangeable accessories listed below.

PRICES

HOME PORTRAIT GRAFLEX, without lens, including focusing panel and one cut film holder (plate holder optional)	5 x 7	\$225.00
With Kodak Anastigmat Lens <i>f.4.5</i> , No. 36		375.00
Graflex Roll Holder, No. 54		16.00
Graflex Cut Film Holder		4.00
Graflex Cut Film Magazine		18.00
Graflex Film Pack Adapter		8.50
Graflex Plate Holder		4.00
Graflex Plate Magazine		18.00
Leather Case for camera and roll holder or cut film magazine		23.50
Leather Case for camera and plate magazine		25.50
Extra Lens Board		1.50
Kodak Cut Film <i>Regular Speed</i> , doz.		1.45
Kodak Cut Film <i>Super Speed</i> , doz.		1.60
Kodak Film Pack, No. 515		1.90
Kodak Film Cartridge, 6 exposures, No. 54		.95

Kodak Anastigmat *f*.4.5



KODAK Anastigmat *f*.4.5 is the triumphant result of new world methods applied to an old world art. This lens is designed in the Kodak laboratories and executed in the Kodak workrooms. And it is tested by such standards of optical excellence that for definition and for flatness of field it is the peer of any lens made anywhere at any price.

Fully open, the Kodak Anastigmat *f*.4.5 cuts cleanly, to the very edge of the film. Such sharpness assures sparkling contact prints and rich enlargements. Toward detail in the picture, the

Kodak Anastigmat at *f*.4.5 admits an abundance of light that makes well-timed negatives easy to get, even in difficult circumstances.

Each Kodak Anastigmat *f*.4.5 is mounted as shown in the illustration, complete with an iris diaphragm controlled by a milled ring on which the *f*. markings are engraved.

No.	Size of Film covered with Stop <i>f</i> .4.5, in Inches	Equivalent Focus in Inches	Price of Lens in barrel with Iris Diaphragm
30	2 $\frac{1}{4}$ x 3 $\frac{1}{4}$	4 $\frac{3}{8}$	\$ 31.00
31	3 $\frac{1}{4}$ x 4 $\frac{1}{4}$	5 $\frac{1}{2}$	35.25
32	4 x 5	6 $\frac{3}{8}$	41.00
33	5 x 7	7 $\frac{1}{2}$	50.00
34	5 x 8	8 $\frac{1}{2}$	62.50
35	6 $\frac{1}{2}$ x 8 $\frac{1}{2}$	10	108.00
36	8 x 10	12	150.00

Terms

PRICES in this catalogue are strictly net, except to regular dealers who carry the goods in stock. These prices are, however, subject to change without notice. For the convenience of our customers, we recommend that they make their purchases from a dealer in photographic goods, as by so doing they can save both transportation charges and time.

THE FOLMER GRAFLEX CORPORATION
ROCHESTER, N. Y.

EASTMAN KODAK COMPANY
ROCHESTER, N. Y.

Kodak Pictorial Diffusion Disk



Focus is sharp, but soft



SOFTNESS of line adds charm to almost any picture, particularly to portraits and landscapes. The Kodak Pictorial Diffusion Disk, slipped over the lens, gives a delightful glow without the obscurity that is found in an out-of-focus image.

Detail is definite, but gentle.

Kodak Pictorial Diffusion Disks, now obtainable for use on four Kodak Anastigmats *f.4.5*, bear the numerical designations of the lenses that they fit.

Please order by number.

PRICES, KODAK PICTORIAL DIFFUSION DISK

No. 31, \$5.00 No. 32, \$5.00 No. 33, \$5.00 No. 34, \$6.00

Inside diameter of flange: No. 31, $1\frac{9}{16}$ in.; No. 32, $1\frac{3}{4}$ in.; No. 33, 2 in.; No. 34, $2\frac{3}{8}$ in.

Graphic Sight Finder

A DIRECT-VISION, folding sight finder, to be attached to the top of the camera. The subject is centered on the image area when the intersection of the lines engraved on the finder lens is in direct aim with the notch in the top of the vertical sight bar.



PRICES

	$3\frac{1}{4} \times 4\frac{1}{4}$	$3\frac{1}{4} \times 5\frac{1}{2}$	4 x 5	5 x 7
Graphic Sight Finder	\$4.00	\$4.50	\$4.50	\$5.25