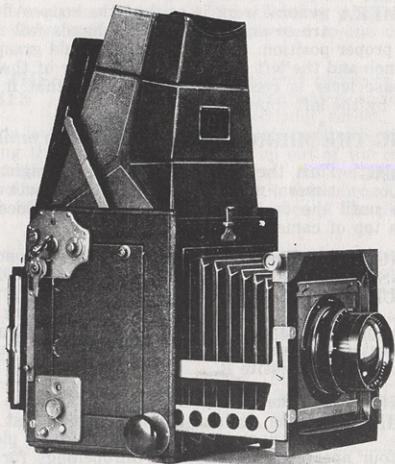


DIRECTIONS

for operating the REVOLVING BACK
HOME PORTRAIT GRAFLEX CAMERA



FOLMER GRAFLEX CORPORATION

ROCHESTER, NEW YORK, U. S. A.

Directions for Operating the Revolving Back Home Portrait Graflex Camera

OPENING CAMERA Open camera by pressing forward on the spring catch directly opposite forward end of handle, allowing the cover to open. Press the two side arms down to draw the focusing hood taut.

POSITION OF CAMERA The correct position to hold the camera for general work is against the body. All controls are so arranged that the hands fall naturally into the proper position. The right hand should grasp the focusing knob and the left hand the front corner of the camera. The release lever is conveniently located so that it may be operated by the left thumb.

SETTING THE MIRROR Press lever H down until it locks.

FOCUSING Turn the large round head on right side of camera, near front lower corner, backwards or forwards until the desired object is sharply defined on the screen in top of camera.

SETTING SHUTTER FOR INSTANTANEOUS EXPOSURES Depress disc D, which surrounds the shaft of lever H and revolve it until letter I stands directly opposite the white mark on lever H, indicating instantaneous exposures. When using camera for fast instantaneous exposures, also revolve disc C until the white line stands opposite R.

SETTING CURTAIN Wind the curtain by turning key A to the left, until the desired aperture appears at F. The Graflex curtain is made in one long piece, containing four apertures as follows: Full openings for time or slow instantaneous, 2", 1" and $\frac{1}{4}$ " apertures for instantaneous exposures. Any of these apertures may be brought into position for exposure by turning key A proceeding from the large, or full, opening to the smaller apertures; or the curtain may be lowered from the smaller to the larger aperture by drawing back on lever M located directly back of the winding key.

A safety lock prevents the curtain from being re-wound before the mirror is set when mechanism is set for instantaneous exposures, this prevents fogging the plate or film while dark slide is withdrawn, making it necessary to set the mirror before rewinding the shutter.

REGULATING SHUTTER SPEEDS

Turn large milled head B, located on right side near bottom at back of camera, to the right until the desired tension number appears at G. The numbers run from 1 to 6, the highest number indicating the greatest speed. To lower tension, push escapement button P, directly below winding button up and down until the tension is lowered to the desired number.

MAKING THE EXPOSURES

To make an instantaneous exposure when the object to be photographed is focused sharply upon the focusing screen, press downward on lever E, near the front on left-hand side of camera, releasing the mirror, which travels up out of the cone of light, automatically releasing the shutter. As the action of these is simultaneous, the object, although moving broadside to camera, can be located perfectly in the center of the plate or film.

The following table gives approximate speeds in fractional parts of a second up to one second:

Tension Number	CURTAIN APERTURE			
	$\frac{1}{4}$	1	2	T-8
1	150	45	10	1
2	200	50	15	$\frac{3}{4}$
3	260	65	20	$\frac{1}{2}$
4	340	80	25	$\frac{1}{4}$
5	410	95	30	$\frac{1}{6}$
6	500	120	35	$\frac{1}{8}$

SLOW INSTANTANEOUS EXPOSURES

Slow instantaneous exposures may be made by winding curtain until T shows on aperture index at F, and turning disc C so that the white line stands opposite letter S, which permits the full curtain aperture, 8", to pass over the

recording field, giving exposures as indicated in fourth column on speed plate, indicated as the 8" curtain aperture column. However, these slow instantaneous exposures may be increased by winding curtain up until the 2" registers at letter F, which will permit the 2" and 8" curtain apertures to pass the recording plane, giving a 25% increased exposure to that shown in the fourth or 8" curtain aperture column. It is not recommended that the entire number of curtain apertures be allowed to pass the recording plane.

TIME EXPOSURES

Depress disc D and revolve until letter T stands opposite the white mark on lever H, turn disc C until the white line stands opposite letter R. Wind the curtain until T shows at the curtain aperture F. Set the mirror in the usual manner. After focusing, release the mirror, which travels up out of the cone of light. Begin the exposure by pressing lever M and terminate the exposure by a second pressure on lever M.

RISING FRONT

The swinging, rising and falling front is controlled by milled head J at right-hand upper corner of front. Being operated by beveled gear and quick thread, it locks automatically at any desired point, but should be centered as indicated by the line on right-hand side before closing front of camera.

REVOLVING BACK

The revolving back may be released for turning to a horizontal, vertical or intermediate position by pressing inward on small button directly below shutter-winding mechanism.

FOCUSING HOOD

The focusing hood may be released by pressing forward the small catch in top of box permitting the hood frame to be raised for the purpose of cleaning the ground glass.

FOLMER GRAFLEX CORPORATION

Rochester, New York. U. S. A.