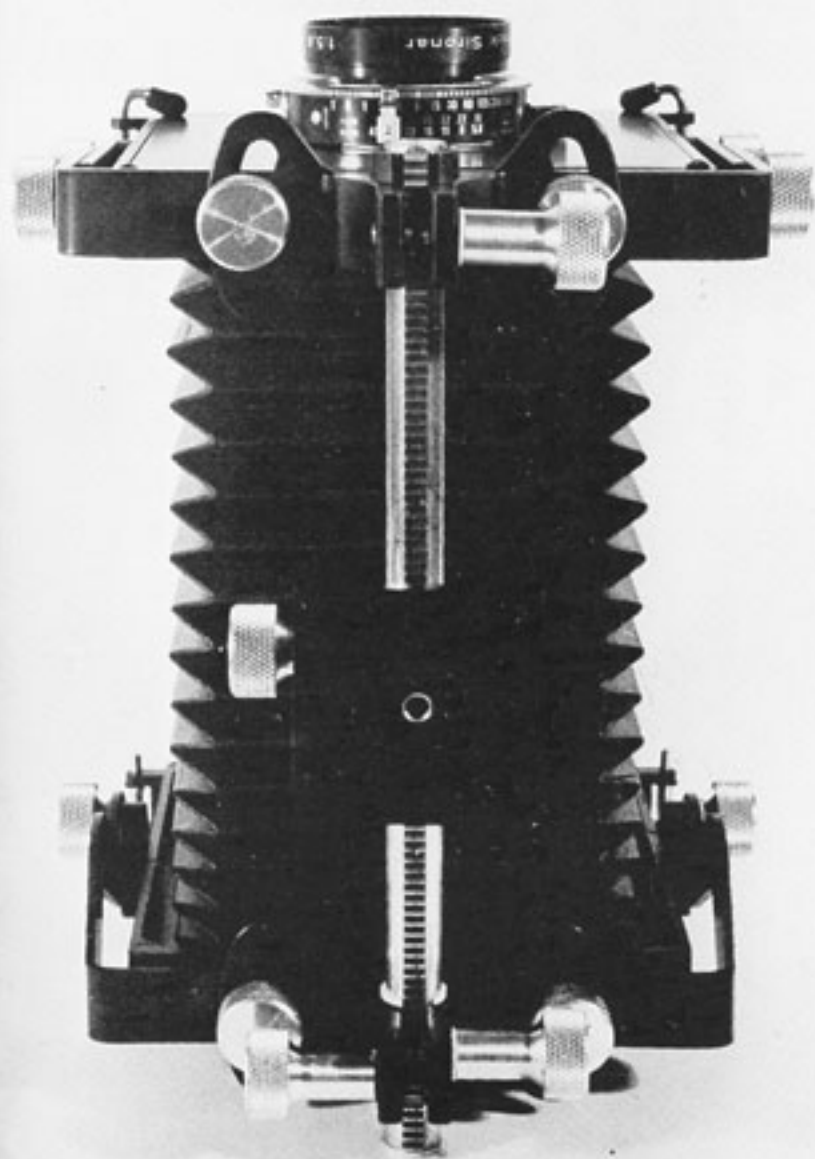


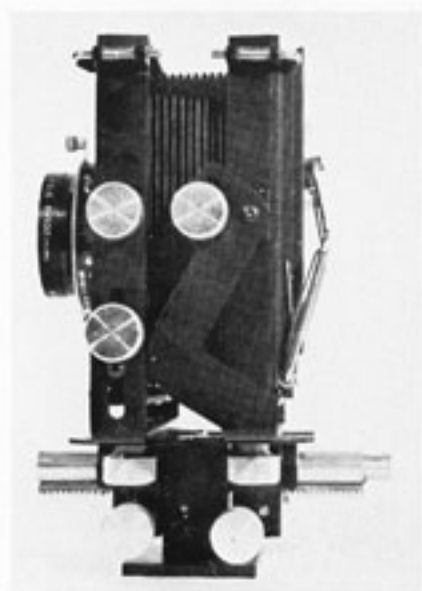
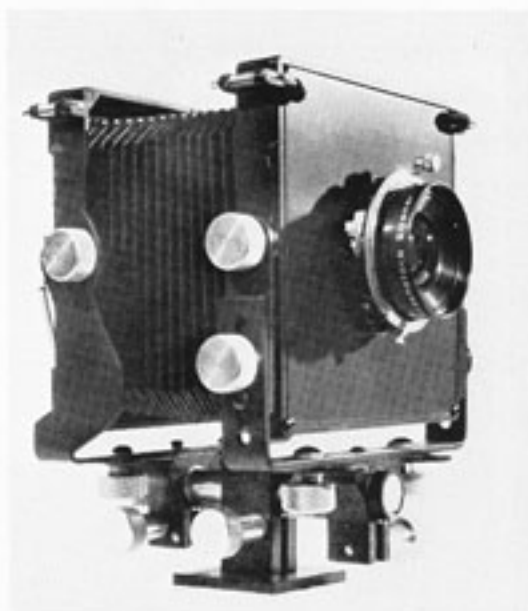
VIEW

2¼ x 3¼



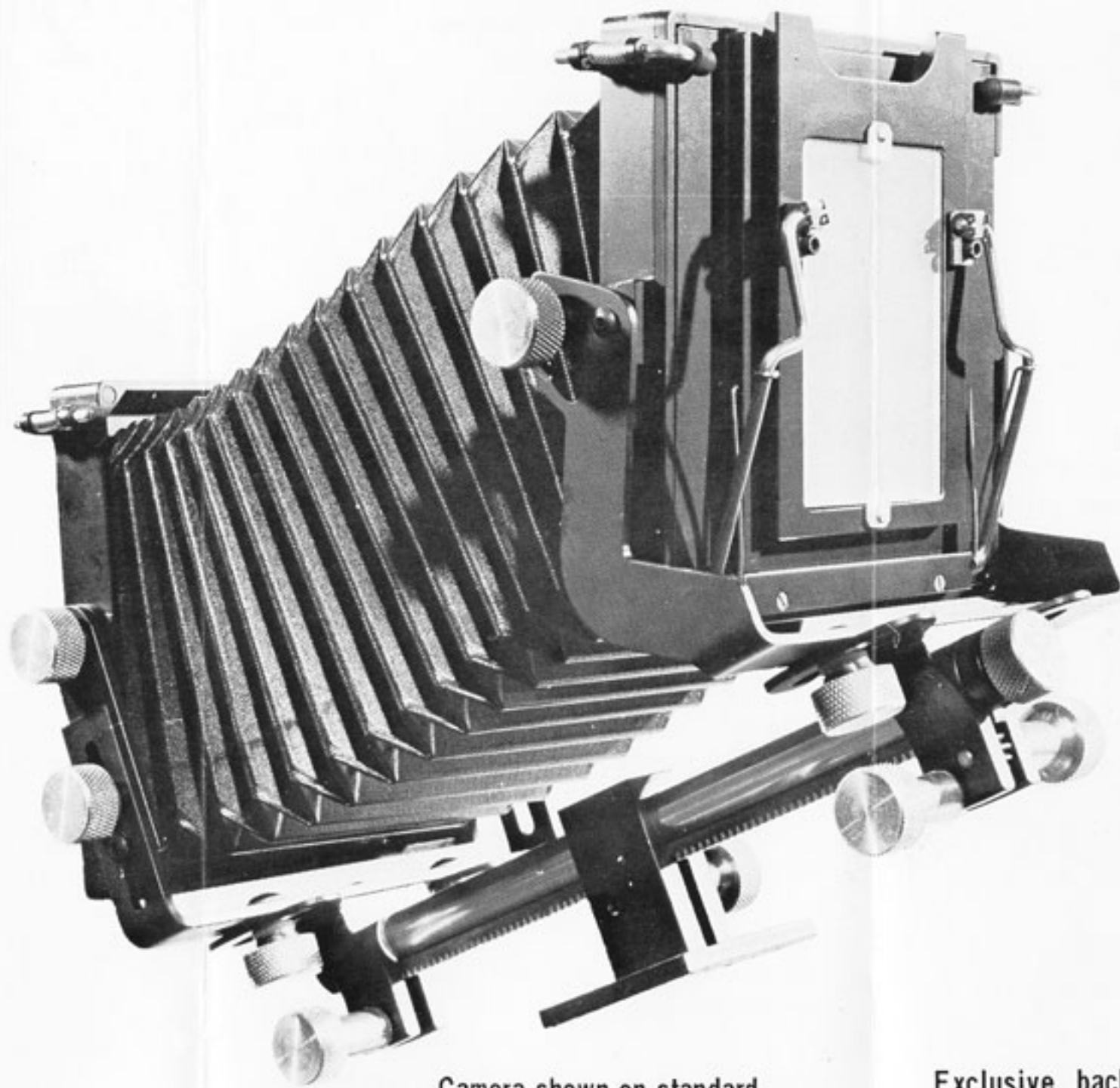
GALVIN CAMERA MFG., INC.

3" to 12" lens capability.
4" normal for 2¼ x 3¼
format.

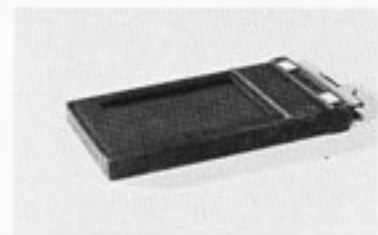


Folds to a
convenient 3¼"

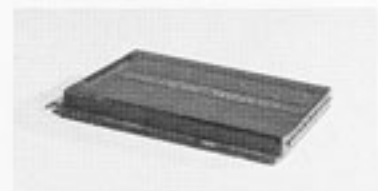
VERSATILE
2¼ x 3¼
LIGHT WEIGHT



Camera shown on standard
9" monorail. 14" 2 piece
monorail optional



SHEET FILM



FILM PACK



120 ROLL FILM
HOLDER

GRAPHIC[®] MAMIYA
RB67 & HORSEMAN

Available in:

2¼ x 2¼

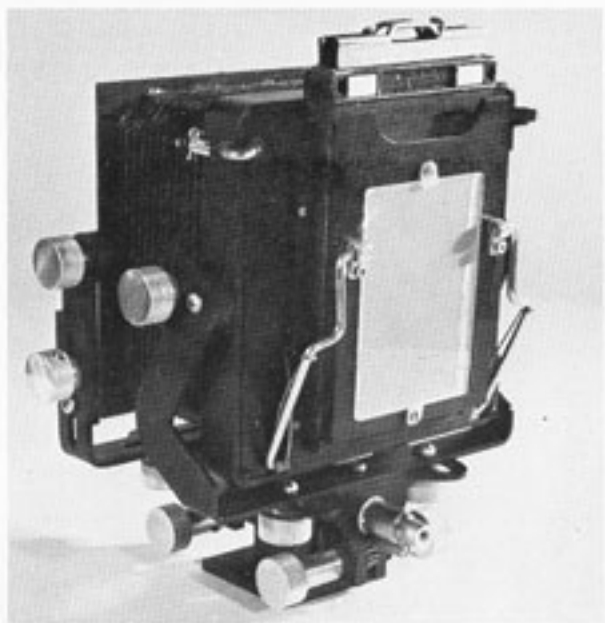
2¼ x 2¾

2¼ x 3¼

Exclusive back design allows use of
popular Roll Film Holders as easily as
standard Sheet Film Holders.

Large format versatility in a size that is a pleasure to take anywhere.

The exclusive universal back accepts an impressive array of film and formats without adapters.



Sheet film, film pack, or roll film. Positive or negative. This camera uses them all conveniently.



2¼ x 3¼ VIEW CAMERA

All aluminum construction.

Finished in flat black with black bellows.

Weight: 2¾ lbs. without lens

Standard Model: 9" Bellows

Long Ext. Model: 14" Bellows

14" Monorail is two piece:

5" front section

9" rear section

Overall Height: 7¾"

Overall Width: 7¼"

Thickness collapsed: 3¼"

Lens Board: 5" sq.

MOVEMENTS

FRONT: Tilt, swing, 30 degrees,
lateral shift ¾" from center,
rise ¾", fall ½"

REAR: Tilt, swing, 30 degrees.
Back may be positioned for vertical
or horizontal format.

Exclusive back (Pat. # 3896464) accepts standard 2¼ x 3¼ sheet film holders, film pack adapters, Graphic® type, Mamiya RB67, Horseman, 120 and 220 roll film holders.

Positive rack and pinion gear focusing, tripod mount and front standard slide on monorail.

Sold without lens.

Prices and specifications subject to change without notice.

GALVIN CAMERA MANUFACTURING, INC.

920 47th Street
Sacramento, California 95819
Phone (916) 451-9678
(916) 451-0725