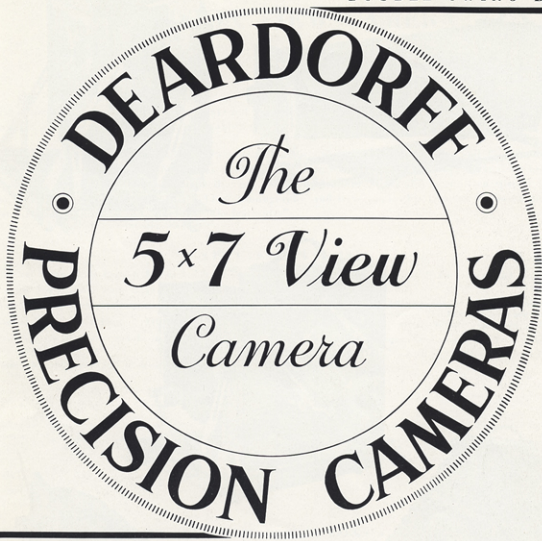


"MAKE THE CORRECTION ON THE NEGATIVE"

DOUBLE SWING BACK



DOUBLE SWING FRONT

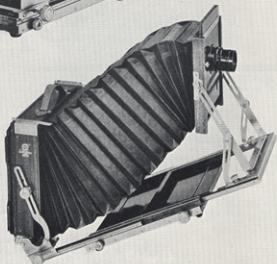
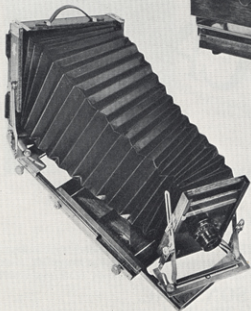
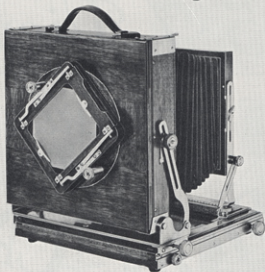
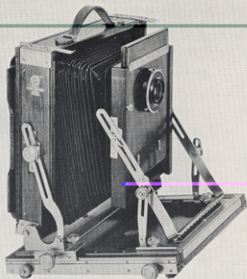
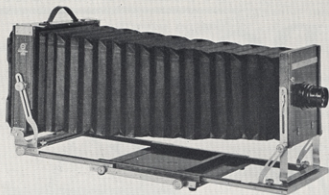
the STANDARD VIEW CAMERA *for*
Color and Black and White Photography

a compact rigid camera permitting the greatest possible image control, the greatest possible depth of field control at the largest possible "taking aperture"

L. F. DEARDORFF & SONS, INC.

11 SOUTH DES PLAINES STREET, CHICAGO 6, ILLINOIS

DESIGNERS AND BUILDERS OF PRECISION CAMERAS AND STANDS FOR CORRECTIVE PHOTOGRAPHY



DEARDORFF

PRECISION VIEW CAMERA

5\7

THIS series made for many years has always led the field in perfection of design, compactness, rigidity, light weight, and ease of manipulation for making perfect reproductions.

The leading Commercial and Illustrative Photographers throughout the United States and Canada not only welcomed this Camera but proclaimed it as the Standard of perfection. The possibilities for making reproductions showing detail, drawing, and perspective not possible heretofore, and also permitting special lighting effects, have improved immensely this field of photography and have made this Camera the most successful instrument ever offered to the "photographic fraternity".

SPECIFICATIONS

The Vertical Swing of the Back is 30° each side of center.

The Lateral Swing of the Back is 20° each side of center.

The Vertical Swing of the Front is 30° each side of center.

The Lateral Swing of the Front is 20° each side of center.

The front and rear Turntables and the front Standard are made of heavy gauge Stainless Steel.

The Front raises and lowers 2¼" from center.

Back is square, reversible all the way around and supplied with cut-out boards.

Bed is made in four sections, Tongue and Groove construction with grain in two directions. The Box and Back are made with interlocking corners and are further reinforced with Metal.

The Lens Board is square and reversible all the way around. Lenses with focal lengths from 3½" to 24" can be accommodated in this camera.

CAMERA

Size of Plate	Focal Length of Lenses From	Bellows Extension	Size of Bellows at Back and Front of Camera		Rise & Fall of Front Total Inches	Lens Board	Camera Closed	Wgt. in Lbs.
			Back	Front				
5x7	3½	24	8¼x8¼	4½x4½	4¾	4x4	9x10¼x3¾	5½

REVERSIBLE CAMERA BACKS • REVOLVING CAMERA BACKS • SPLIT SLIDING CARRIAGE

Size of Camera	Size of Back	Size of Camera	Size of Back	Size of Camera	Size of Film	Size of Opening
5x7	5x7 5x7-4x5 5x7-3¼x4¼ 5x7-2¼x3¼	5x7	4x5 3¼x4¼	5x7	5x7	3½x5

CAMERA LENS BOARD

Size of Camera	Size of Board	Style of Board or Adapters
5x7	4x4	Deardorff Board Graphic C Board Pacemaker Adapter to receive Pacemaker Boards

LENSES AND SHUTTERS For DEARDORFF CAMERAS

The table below lists lenses of several focal lengths for various phases of Commercial and Illustrative Photography. It should be noted that the emphasis in the table is on focal lengths. These focal lengths definitely should be part of every photographer's equipment because only by his choice of the proper focal length of lens can the best perspective and control of image distortion be accomplished.

LENS AND SHUTTER EQUIPMENT — 5x7 VIEW CAMERA WITH 24-INCH BELLOWS

4¼" to 5" E.F.L., f/6.8 to f/8 wide-angle lens in shutter;
for wide-angle photography.

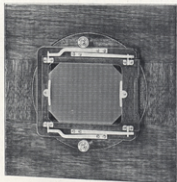
7" to 8½" E.F.L., f/6.3 to f/6.8 lens in shutter;
for average work.

9½" to 12" E.F.L. f/9 to f/10 lens in shutter;
for corrective photography.

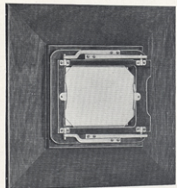
14" to 16½" E.F.L. f/9 to f/10 lens in shutter;
for corrective photography.

Catalogues of the leading lens makers may be had upon request. Advice on the correct types and focal lengths of lenses for any photographic problem given to anyone presenting their difficulties in writing with suitable photographs.

ACCESSORIES FOR 5x7 VIEW CAMERA



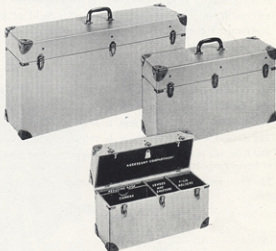
Revolving Camera Backs
for 4x5 or 3¼x4¼
film sizes



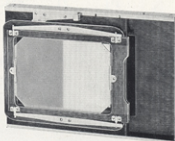
Reversible Camera Backs
for 5x7, 4x5 or
3¼x4¼ film sizes



Handi-Stand
6 Foot—8 Foot



Carrying Cases



Split Sliding Carriage

CORRECTIVE PHOTOGRAPHY, by Lewis L. Kelsey, is an illustrated elementary textbook on Camera Swings And How To Use Them. The subject is presented in a simplified and understandable manner. Answers all questions about the practice of Corrective Photography. Every photographer should have a copy for reference purposes.

Published by

L. F. DEARDORFF & SONS, INC.